

Saved by the Book
Help raise money for Bury Hospice by reading!

Pick up your Bury Hospice collection box from Ramsbottom Library to have at home, at your reading group or at school. Choose on an amount to donate for each book you borrow and read from Bury Libraries - it could be 10p, 20p, £1, or more, it's up to you!

Every time you finish a library book, put your donation in your collection box.

On 30th November 2017 all boxes need to be handed into Ramsbottom Library where monies raised will be collected and sent to Bury Hospice.

If you are interested in taking part pop into Ramsbottom Library or email Louise at L.Guilfoyle@bury.gov.uk.

Bury Libraries

EVERY PENNY COUNTS
BURY HOSPICE



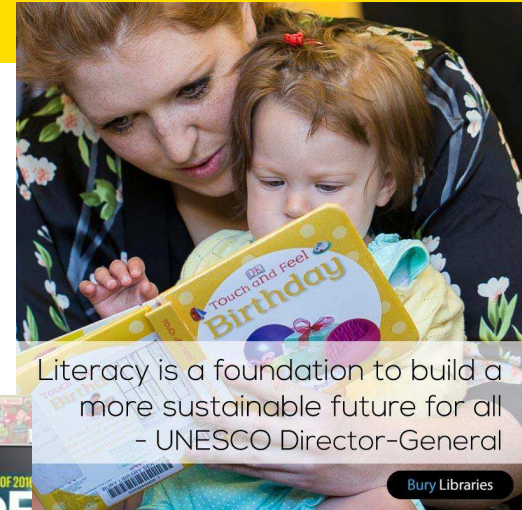
THE LIBRARY REVIEW

Department for Children, Young People and Culture

Bury
COUNCIL

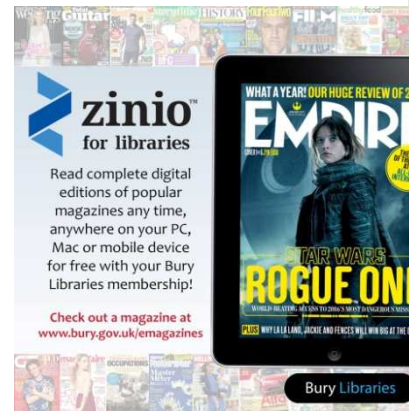
6 Principles

1. Library services across the borough
2. Protecting the vulnerable
3. Cost effective
4. Technology
5. Volunteers
6. Communities

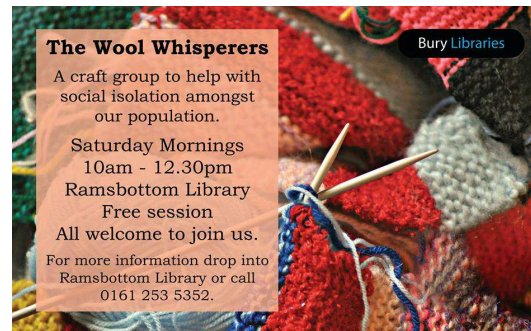


Literacy is a foundation to build a more sustainable future for all
- UNESCO Director-General

Bury Libraries



Bury Libraries



Bury Libraries

[f /BURYLIBRARIES](#) [v /BURYLIBRARIES](#) [s /BURYLIBRARIES](#) [t @BURYLIBRARIES](#)
WWW.BURY.GOV.UK/LIBRARIES

Bury
COUNCIL

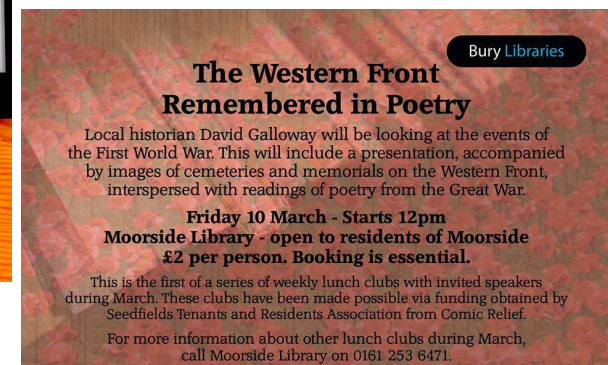
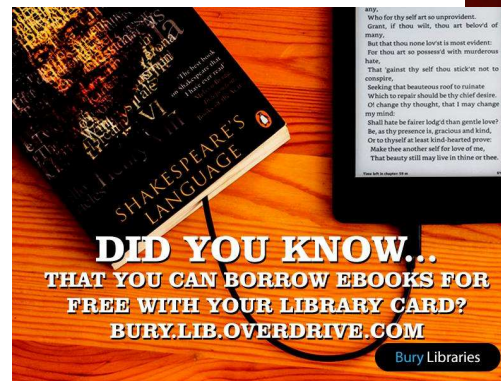


Department for Children, Young People and Culture

Bury
COUNCIL

2 consultations showed...

- Books & Reading
- Community
- Staff
- Volunteers
- Children
- Access
- Technology
- Learning



WWW.FACEBOOK.COM/BURLIBRARIES @BURLIBRARIES
WWW.BURY.GOV.UK/LIBRARIES



Department for Children, Young People and Culture



The Core Offer

Reading & Literacy



Digital Inclusion



Information & Learning

Bury Libraries

Digital Buddy Volunteer Sessions

Whether you've never used a computer, tablet or smartphone before, or just want to enhance your existing skills, we're here to help with weekly, free of charge, one-to-one sessions.

Call into one of the libraries or phone to book a slot with one of our friendly Digital Buddy Volunteers.

Bury Library Computer Centre - 0161 253 7089 Tuesday/Thursday/Friday at 10.30am. Saturday 10am-12pm	Tottington Library 0161 253 7214 Thursday 10am-12pm
Prestwich Library 0161 253 7214 Tuesday/Thursday 10am-12pm	Whitefield Library 0161 253 7510 Tuesday 10am-12pm

Thinking outside the books

[Facebook](#) /BURYLIBRARIES [YouTube](#) SEARCH "BURY LIBRARIES" [Twitter](#) @BURYLIBRARIES [Website](#) WWW.BURY.GOV.UK/LIBRARIES

Bury
COUNCIL

Community Support
& Development

Baby Basics Donation Bin at Ramsbottom Library

Our Baby Basics bin welcomes second hand newborn and 0-3 month clothing (or new if you wish), first size nappies, baby wipes, lotion, soap, shampoo, towels, Moses baskets and blankets.

Baby Basics also need items that Mums require such as maternity pads, breast pads, body wash, shampoo and conditioner, toothbrush and toothpaste (for labour bag).

Baby Basics accepts knitted and crocheted items, or if you can sew you could donate quilted blankets for Moses baskets.

Bury Libraries

Department for Children, Young People and Culture

Bury
COUNCIL

The thing we cannot escape...

COUNCIL BUDGET

65M cuts to date

32M further cuts

2017/20

By 2020 –

no more Central

Govt Grant

Council to be self
sufficient

LIBRARIES BUDGET

Reduced in 2013/14

by £870K

Currently £2.4*
million

Reducing in 2017/18

by £500K

Reducing in 2018/19

by £500K

OPTION 1

Retain Bury,
Ramsbottom
and Prestwich
Libraries plus a
service wide
team



OPTION 2

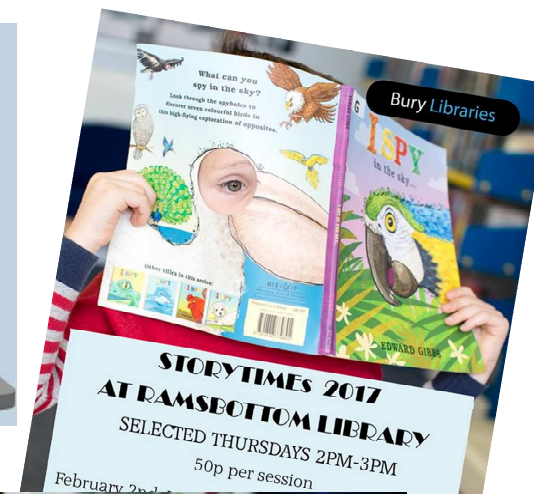
Retain Bury,
Ramsbottom,
Prestwich and
Radcliffe
Libraries plus a
smaller service
wide team

Have your say about your Library Service



**Complete the
survey now**

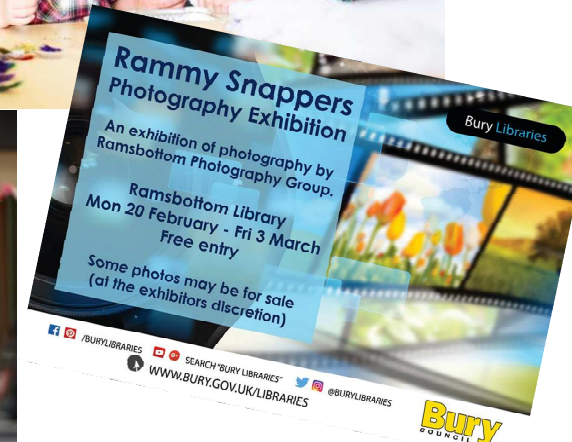
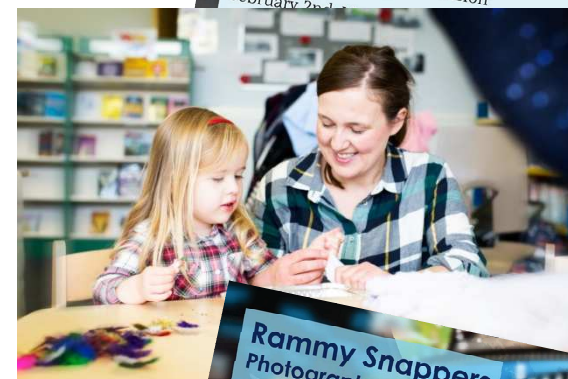
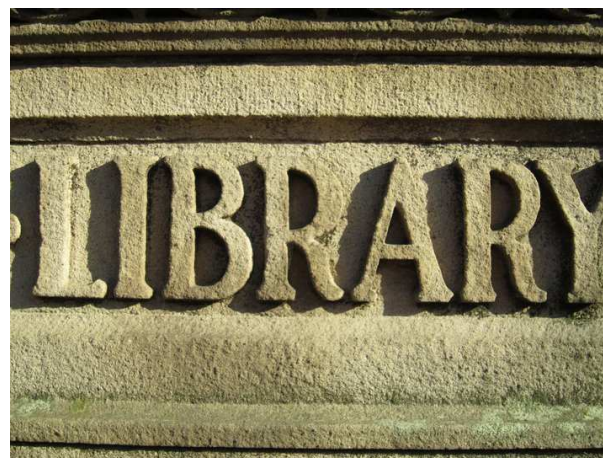
Take part in the survey online:
<https://www.surveymonkey.co.uk/r/bury-libraries-consultation>
or pop into any Bury Library for a paper copy



Did you know...
 We offer help in
researching local history?
 Digitised local trade directories
<http://bit.ly/2e1go0v>
 Bury Times stories (1855 to 1909)
<http://bit.ly/2eFPPrTw>
Thinking outside the books

Facebook: /BURYLIBRARIES, Twitter: @BURYLIBRARIES, YouTube: SEARCH 'BURY LIBRARIES', Website: WWW.BURY.GOV.UK/LIBRARIES

Bury COUNCIL



Department for Children, Young People and Culture



Next Steps

Public Consultation on proposed models / options for change	Ends 26th April 2017
Final Report to Cabinet on decisions to be taken	May 18 th 2017
Staff consultation	Begins July 2017
Implementation	From August 1 st 2017

library.suggestions@bury.gov.uk



Department for Children, Young People and Culture

